

RICOH
imagine. change.

Device Manager NX Accounting

Assessment & Cost Recovery Solution



Ricoh Device Manager NX Accounting

A Smarter Way to Track Efficiency

The customizable RICOH® Device Manager NX Accounting software solution helps put you on the fast track toward cost savings. This easy-to-use utility offers comprehensive administrative tools to perform essential billing and reporting tasks—including accurate charge backs—from the convenience of your desktop. It can be installed quickly on a standard PC and works with both networked Ricoh and third-party devices. Additionally, it leverages advanced capabilities found only in the latest generation devices based on Ricoh's services-led platform. Use it to allocate resources more effectively and to manage your document output fleet more economically.

Measure costs accurately

Use Ricoh Device Manager NX Accounting to create multiple customized administrative and end-user reports to capture print, copy, scan and fax usage for Ricoh devices across the network. Automate tracking and billing with the Scheduler feature—right down to individual users or departments—to improve cost savings by identifying wasteful printing.

Monitor your networked devices proactively

Early detection can prevent a lot of problems. Administrators can use Ricoh Device Manager NX Accounting to proactively monitor a wide range of device properties such as consumable levels, paper supplies and service conditions in order to quickly troubleshoot issues and minimize downtime. Take advantage of easy-to-use, drag-and-drop display columns to personalize device monitoring and management tasks to fit your unique requirements.

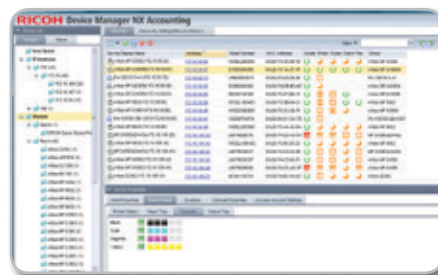
Manage devices centrally

Take advantage of centralized controls and an intuitive, user-friendly interface to simplify device management on services-led platform Ricoh devices. Manage individual device features such as paper types, transition to energy saving mode and even network settings right from your desktop. Clone settings and features on one device and assign them to another device—or group of devices—for fast, convenient configurations and installations. Set and control user privileges to restrict access to specific functions and curb excessive or unauthorized usage.

Automate fleet management

Optimize fleet efficiency. Check status and activity for up to 250 Ricoh and non-Ricoh devices in your network fleet right from the desktop. Set and implement standardized policies across the entire fleet to streamline administrative tasks and create a consistent, reliable device management strategy. You can even categorize groups of devices using manual, dynamic or automatic grouping to quickly help you find exactly what you need.

Department	User Code	User Name	Color Pages	Color Cost
Marketing	User 300	User 300	937	26.34
	User 301	User 301	479	14.01
	User 302	User 302	99	3.00
	User 303	User 303	601	180.64
	User 304	User 304	234	709.52
Accounting	User 205	User 205	1815	549.20
	User 211	User 211	99	3.02
	User 213	User 213	132	40.54
Sales	User 214	User 214	53	1.64
	User 215	User 215	45	1.36
	User 307	User 307	234	71.72
	User 308	User 308	54	1.62
	User 321	User 321	21	0.64
	User 322	User 322	576	175.68
	User 323	User 323	44	1.36
	User 325	User 325	74	2.22
	User 326	User 326	321	98.49



Specifications

System Requirements

Minimum:	CPU: Intel® Core™2 Duo Processor 1.6 GHz or higher RAM: 1.0 GB HDD: 1.2 GB free space
Client Operating System:	Windows® XP Home/Professional SP3 and later (32bit) Windows® Vista Home Premium/Business/Enterprise/Ultimate SP2 and later (32bit) Windows® 7 Home Premium/Professional/Enterprise/Ultimate SP1 and later (32bit/64bit) Windows® 8/Pro/Enterprise (32bit/64bit)
Database:	Apache Derby DB included
Protocols:	SNMP v1/v2/v3 HTTP HTTPS (client only) DNS FTP/SFTP LDAP (Type R only)
Security:	Hash: SHA-256 and higher Symmetrical algorithm: RSA2048 and higher Asymmetrical algorithm: AES256 and higher Not supported
Virtualization:	Not supported
Supported Devices:	General Support: <ul style="list-style-type: none">• Networked Ricoh MFP and Laser Printers introduced in 2005 and later• Networked Ricoh GELJET™, GDI and SMART controller devices• Networked standard MIB devices Services-led platform networked Ricoh devices introduced in 2012 and later
Enhanced Support:	Ricoh Family Group MFP and Laser Printers introduced in 2005 and later which support User Authentication
User Accounting Support:	

RICOH
imagine. change.

www.ricoh-usa.com