

# Integrated Cloud Environment

Ricoh's Cloud Solution



**Ricoh's Integrated Cloud Environment** lets you power up your Ricoh MFP with powerful scanning, OCR file conversion, document delivery and mobile printing as cloud services. There's no software to buy. You just open an account.

Ricoh's Integrated Cloud Environment ("ICE") makes document scanning & routing easier. Its powerful OCR engine converts your scanned documents into editable files and lets you send them to email or directly to your favorite cloud services -- for access to your documents whenever you're on the go.



## Scan to Email



Scan to Email lets you send a scanned document as an attachment to any email address. The OCR and file conversion are managed in the cloud, where your scanned image data is converted to a searchable file format. An intuitive user interface and easy settings (such as registered users, color, duplex and file type) make for simple operation. Scan to Email uses 128-bit encrypted transmission.

## Scan to OCR

Ricoh ICE turns your scanned paper documents into Searchable PDF, Word or Excel files. Your Ricoh MFP is OCR capable with Ricoh ICE!



## Reduce the typing burden

Typing up a whole paper document can be a lengthy task. Scanning to Ricoh ICE makes it easy to convert paper documents into editable file formats, such as searchable PDFs, Word or Excel files.

## Make it searchable and go right where you want in the document

It can be challenging to find the area you want in a lengthy document. Ricoh ICE converts your scanned documents into searchable formats, so it will be easier to search, edit, and process later.

## Scan Directly to Cloud Services

Currently Ricoh ICE provides scanning to these applications:

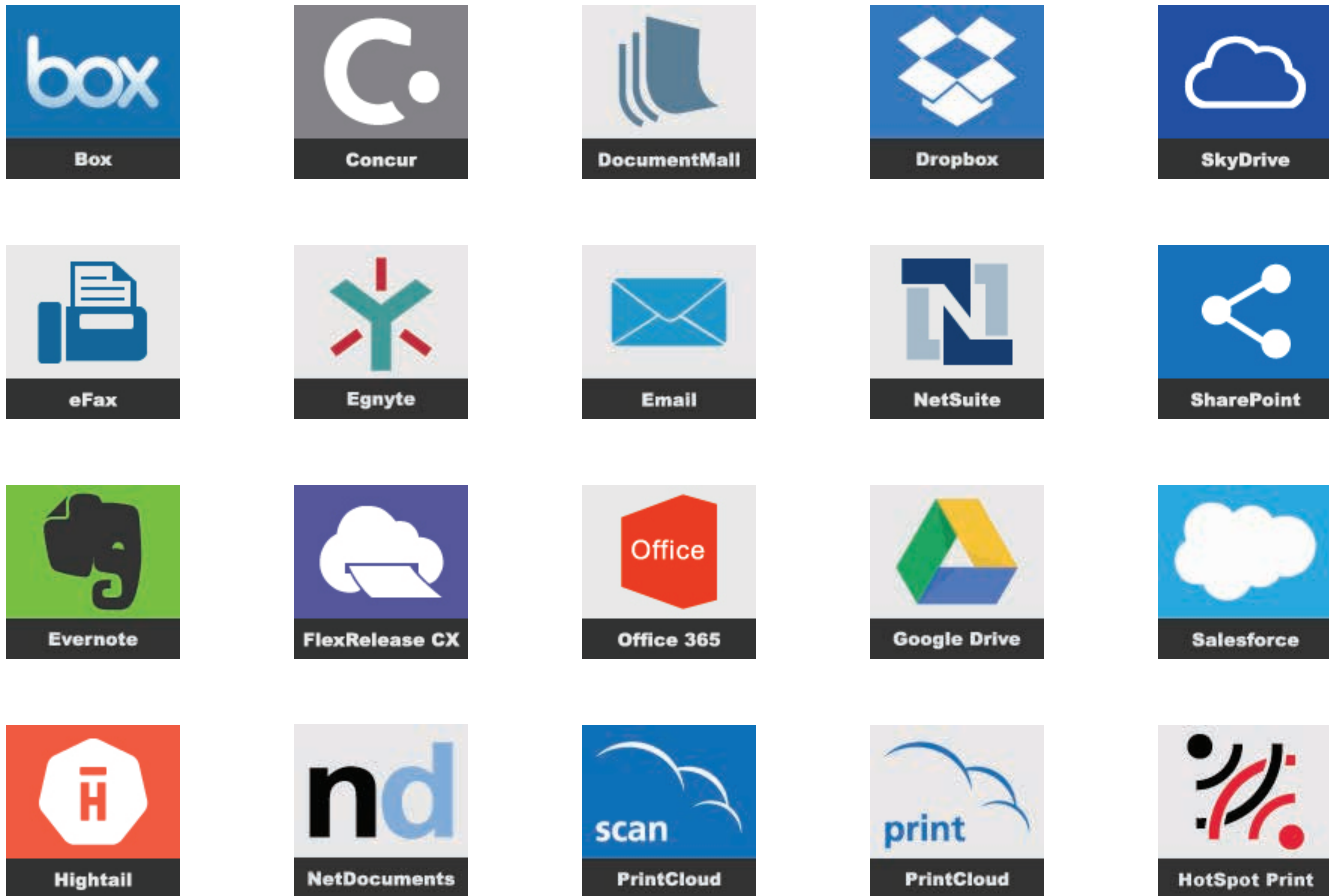


- Box
- Concur
- Evernote
- Egnyte
- SharePoint
- SkyDrive
- Google Drive
- DropBox
- YouSendIt
- NetDocuments
- Salesforce
- NetSuite
- DocumentMall
- HotSpot Print
- PrintCloud
- Office 365
- eFax



# Compatible Services

Many cloud services are available for business productivity, cloud storage, collaboration and CRM. The Integrated Cloud Environment includes built-in connections that let you scan directly to these popular applications. You can save steps by scanning documents into the applications you use right from the MFP.

## Scan to:



Whether you need basic scan to searchable PDF or a multi-user scanning, printing and storage solution, our packages offer simple pricing and the opportunity to expand when you need more capabilities.

Integrated Cloud Environment Package Types		 Standard Package	 Print Cloud Package
<b>Scan-to-Cloud<sup>3</sup></b>	Scan to Email	✓ <sup>1</sup>	-
	Google Drive	✓ <sup>1</sup>	-
	Evernote	✓ <sup>2</sup>	-
	Box	✓ <sup>1</sup>	-
	Hightail	✓ <sup>1</sup>	-
	Salesforce	✓ <sup>1</sup>	-
	DocumentMall	✓ <sup>1</sup>	-
	Concur	✓	-
	Egnyte	✓ <sup>1</sup>	-
	SharePoint	✓ <sup>1</sup>	-
	SkyDrive	✓ <sup>1</sup>	-
	Dropbox	✓ <sup>1</sup>	-
	NetDocuments	✓ <sup>1</sup>	-
	NetSuite	✓ <sup>1</sup>	-
	Print Cloud	✓ <sup>1</sup>	-
	Office 365	✓	-
	FlexRelease CX	✓	-
	HotSpot Print	✓	-
eFax	✓	-	
<b>Print Cloud</b>	Mobile / Cloud Printing	-	5 - 20,000 users 2 GB/user

<sup>1</sup> Comes with OCR powered by ABBYY

<sup>2</sup> Scan to Evernote® uses Evernote® OCR

<sup>3</sup> Each account provides access to all included connectors; enable the ones you want.

The Integrated Cloud Environment unlocks new productivity-enhancing capabilities from your MFP without the technical hassle and cost of on-premises solutions. Services are easy to turn on and add or change with your needs.

## No IT Services Required

	On-Premise	Cloud Service
<b>Operating Environment</b>	Server cost System integration Space/Noise/Electricity	No server or system integration needed Application is hosted and ready to use
<b>Software Maintenance</b>	Software updates/virus concerns License management	No maintenance needed Software updates & licenses included
<b>Acquisition</b>	Capitalization	No IT capitalization needed Hosted, on-demand application

## Ideal for Mobile Users

The Integrated Cloud Environment is ideal for mobile professionals and people on the go. The ability to scan and send documents from the MFP to your mobile device, storage location and a variety of other cloud-based applications gives mobile workers the productivity they need with the flexibility they want. This automation is complemented by the Print Cloud follow me-style printing. With Print Cloud you can print from any Print Cloud enabled MFP, without installing printer drivers or even knowing where you'll be...because with Print Cloud your documents can find you.

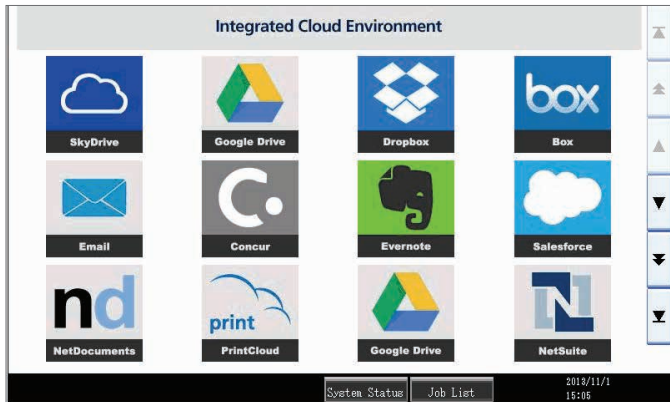
## Your Key to Process Automation

Integrated Cloud Environment features enterprise class OCR as one of its standard features. This allows each document that is scanned to be turned into a digital document with completely searchable text and meta data included to identify the documents and facilitate search, retrieval and time saving document processes.

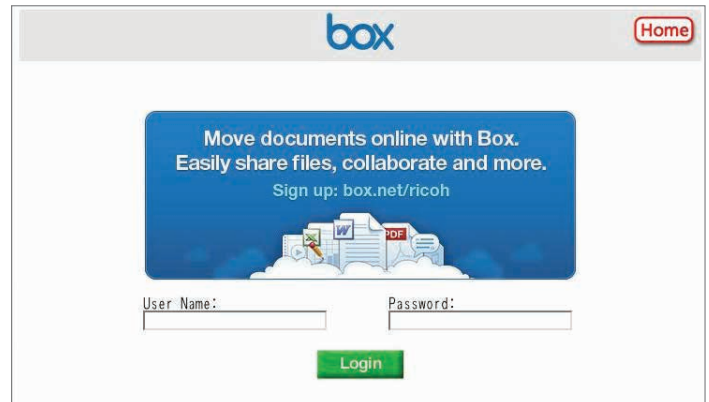
## 128-bit SSL Encryption

Integrated Cloud Environment provides 128-bit encryption of documents during the scanning and printing processes. Ricoh's Integrated Cloud Environment is within a SSAE16 compliant facility.

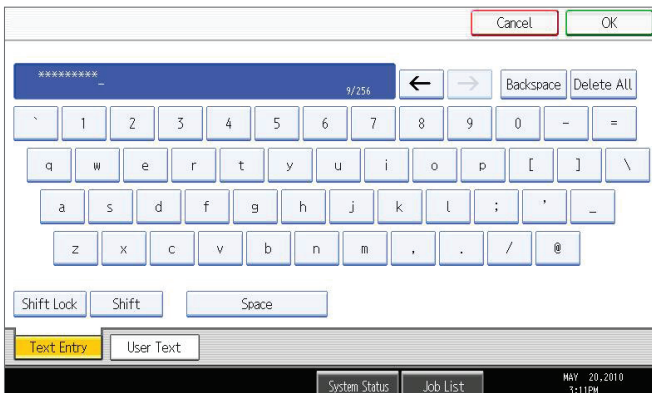
At the MFP you can access the capabilities of the Integrated Cloud Environment from the touch screen panel. The simple, easy to use interface has large graphical buttons and only the services that have been activated appear. As new services are added they automatically appear in the Integrated Cloud Environment menu displayed on the MFP.



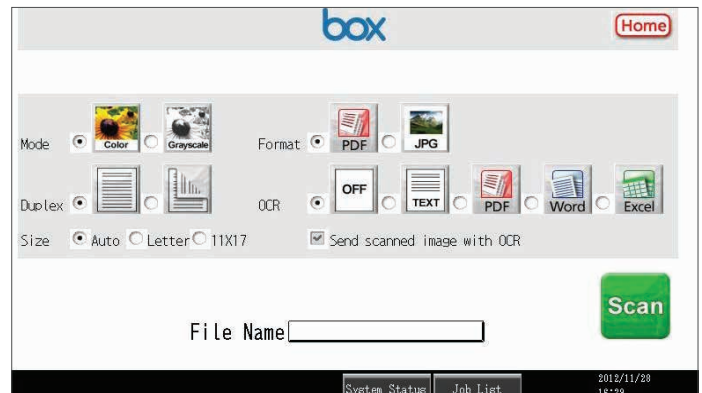
Integrated Cloud Environment main screen showing the subscribed services



Login to your account from the MFP's touch screen display



Soft keyboard right at the MFP for easy text entry



Easy scanning settings at the MFP including: color, duplex and file type

Print Cloud allows you to print anywhere using your PC or mobile device by obtaining a document release code. This follow me-style printing lets you retrieve your documents from any Print Cloud enabled MFP, without installing printer drivers or having to specify the printer from which you want to print.



## Who Should Use Print Cloud

- Mobile users looking for follow me-style printing

## Benefits

- Print Cloud solves the problem of not having access to a printer when you're mobile
- You don't need to connect to a network in order to print
- Multiple ways to submit a print job, including your laptop, Smartphone or mobile device to print to any Print Cloud-enabled printer or MFP
- Supports printing of the email body along with attachments and URLs contained in the email
- Follow me-style printing lets you print your documents at any Print Cloud enabled MFP without specifying the MFP in advance
- Control output settings at the MFP including: number of copies, duplex, layout or stapling

## Using Print Cloud

- To use the service, you "print" to the cloud from the action menu in any file, or you can email your print job directly to the Ricoh Print Cloud at [print@iceprintcloud.com](mailto:print@iceprintcloud.com)
- Your files are held in the cloud until you are ready to pick them up.
- The software can process and print attachments such as Microsoft Word, Excel, or PowerPoint files; PDFs, photos, webpages, even the email body text.
- Once the mail is received by the Ricoh Print Cloud service, a release code is generated and mailed back to you. Or, you can choose to receive the release code via SMS.
- Simply enter your release code at the device to retrieve your prints.
- Collaboration features for document sharing allow documents to be sent to specific recipients and locked to prevent re-sharing with unauthorized people. The sender can also limit the duration of the shared document's availability.

## Implementing this Solution

- Cloud Scanning is complemented by the Ricoh Print Cloud.
- Print Cloud is a service so there's no software to buy or install

## Target Markets & Applications

- Mobile workers

# Compatible MFP Models



These Ricoh MFPs are compatible with Integrated Cloud Environment.

- Aficio MP C300
- Aficio MP C305
- Aficio MP C400
- Aficio MP C2000
- Aficio MP C2003
- Aficio MP C2050
- Aficio MP C2051
- Aficio MP C2500
- Aficio MP C2503
- Aficio MP C2550
- Aficio MP C2551
- Aficio MP C2800
- Aficio MP C3000
- Aficio MP C3001
- Aficio MP C3002
- Aficio MP C3003
- Aficio MP C3300
- Aficio MP C3500
- Aficio MP C3501
- Aficio MP C3502
- Aficio MP C3503
- Aficio MP C4000
- Aficio MP C4500
- Aficio MP C4501
- Aficio MP C4502
- Aficio MP C4503
- Aficio MP C5000
- Aficio MP C5501
- Aficio MP C5502
- Aficio MP C5503
- Aficio MP C6000
- Aficio MP C6501
- Aficio MP C6502
- Aficio MP C7500
- Aficio MP C7501
- Aficio MP C8002
- Aficio MP 2001
- Aficio MP 2501
- Aficio MP 2550
- Aficio MP 2553
- Aficio MP 2851
- Aficio MP 2852
- Aficio MP 3052
- Aficio MP 3350
- Aficio MP 3351
- Aficio MP 3352
- Aficio MP 4000
- Aficio MP 4001
- Aficio MP 5000
- Aficio MP 5001
- Aficio MP 5002
- Aficio MP 5500
- Aficio MP 6000
- Aficio MP 6001
- Aficio MP 6002
- Aficio MP 6003
- Aficio MP 6500
- Aficio MP 7000
- Aficio MP 7001
- Aficio MP 7500
- Aficio MP 7502
- Aficio MP 8000
- Aficio MP 8001
- Aficio MP 9000
- Aficio MP 9001
- Aficio MP 9002
- Aficio SP 301SPF
- Aficio SP 5200S
- Aficio SP 5210SF
- Aficio SP 5210SR
- Ricoh Pro 907EX
- Ricoh Pro 1107EX
- Ricoh Pro 1357EX
- Ricoh Pro 8100S
- Ricoh Pro 8110S
- Ricoh Pro 8120S
- Ricoh Pro C5100S
- Ricoh Pro C5110S



*Older models which are not listed are also supported. Please contact your sales rep for a complete list of all supported devices.*

## Contact Us

If you want to learn more about Ricoh's Integrated Cloud Environment, please contact us online at [www.ricoh-cloud.com /support/ contact\\_us](http://www.ricoh-cloud.com/support/contact_us).

Ricoh® and the Ricoh Logo are registered trademarks of Ricoh Company, Ltd. All other company or product names and trademarks are the property of their respective owners. © 2014 Ricoh Americas Corporation. All rights reserved.

Information and specifications subject to change without notice.

Ricoh Americas Corporation  
70 Valley Stream Parkway  
Malvern, PA 19355  
800-63-RICOH